

The Pinewood 4

3 Bedrooms, Den, 2 Baths, 2 Car Garage

Living Area:	2,214 SQ. FT
Covered Entry:	166 SQ. FT
Covered Patio:	190 SQ. FT
2/Car Garage:	427 SQ. FT
Total	2,997 SQ. FT



Key Features

The Pinewood 4 is a smaller version of our popular Pinewood Great Room plan with plenty of room for families.

- ✓ 3 Bedrooms
- ✓ Den
- ✓ 2 Bathrooms
- ✓ 2 Car Garage
- ✓ Walk-in Pantry
- ✓ Sports Shower

About RJM Custom Homes

RJM is family owned and operated custom home builder who has built more than 1,000 homes in South Florida over the past 2 decades.



Floorplans are intended for informational purposes and are not exact or drawn to scale.

Copyright 2016 RJM Custom Homes
 5511 Royal Palm Beach Blvd., West Palm Beach, FL 33411

The Pinewood 5

4 Bedrooms, Den, 3 Baths, 2 Car Garage

Living Area:	2,479 SQ. FT
Covered Entry:	174 SQ. FT
Covered Patio:	190 SQ. FT
2/Car Garage:	427 SQ. FT
Total	3,179 SQ. FT



Key Features

The Pinewood 5 is split plan allowing everyone to have their own space.

- ✓ 4 Bedrooms
- ✓ Den
- ✓ 3 Bathrooms
- ✓ 2 Car Garage
- ✓ Sports Shower
- ✓ Large Laundry Room

About RJM Custom Homes

RJM is family owned and operated custom home builder who has built more than 1,000 homes in South Florida over the past 2 decades.



Floorplans are intended for informational purposes and are not exact or drawn to scale.

Copyright 2016 RJM Custom Homes
 5511 Royal Palm Beach Blvd., West Palm Beach, FL 33411

The Pinewood 6

5 Bedrooms, Den, 3 Baths, 2 Car Garage

Living Area:	2,649 SQ. FT
Covered Entry:	166 SQ. FT
Covered Patio:	190 SQ. FT
2/Car Garage:	427 SQ. FT
Total	3,432 SQ. FT



Key Features

The Pinewood 6 is the perfect plan for those with large families.

- ✓ 5 Bedrooms
- ✓ Den
- ✓ 3 Bathrooms
- ✓ Huge Bedroom/Game Room
- ✓ Large Laundry Room
- ✓ Sports Shower 2 Car Garage

About RJM Custom Homes

RJM is family owned and operated custom home builder who has built more than 1,000 homes in South Florida over the past 2 decades.



Floorplans are intended for informational purposes and are not exact or drawn to scale.

Copyright 2016 RJM Custom Homes
 5511 Royal Palm Beach Blvd., West Palm Beach, FL 33411

Pinewood Great Room

4 Bedrooms, Den, 3 Baths, 2 Car Garage

Living Area:	2,620 SQ. FT
Covered Entry:	166 SQ. FT
Covered Patio:	190 SQ. FT
2/Car Garage:	427 SQ. FT
Total	3,411 SQ. FT



Key Features

The *Pinewood Great Room* features RJM's popular Pinewood Series layout with a large 16' x 33' great room.

- ✓ 4 Bedrooms
- ✓ Den
- ✓ 3 Bathrooms
- ✓ Large Great Room
- ✓ Walk In Pantry
- ✓ 2 Car Garage

About RJM Custom Homes

RJM is family owned and operated custom home builder who has built more than 1,000 homes in South Florida over the past 2 decades.



Floorplans are intended for informational purposes and are not exact or drawn to scale.

Copyright 2016 RJM Custom Homes
 5511 Royal Palm Beach Blvd., West Palm Beach, FL 33411

Optional Elevations (The Pinewood Series)

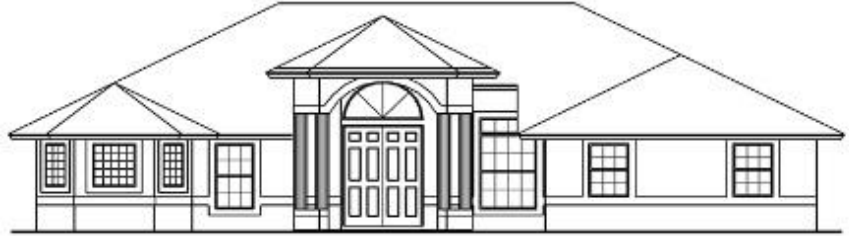
Elevation 1

- ✓ Single Master Bath Window
- ✓ Front-Entry Garage



Elevation 2

- ✓ Squared Windows
- ✓ 3 Master Bath Windows
- ✓ Side-Entry Garage



Elevation 3

- ✓ 3 Master Bath Windows
- ✓ Side-Entry Garage



Floorplans are intended for informational purposes and are not exact or drawn to scale.

Copyright 2016 RJM Custom Homes
5511 Royal Palm Beach Blvd., West Palm Beach, FL 33411