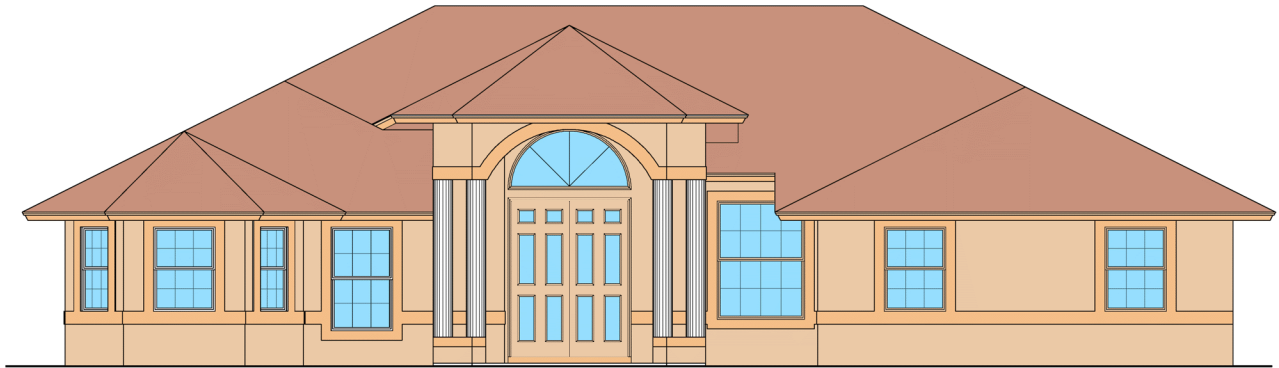
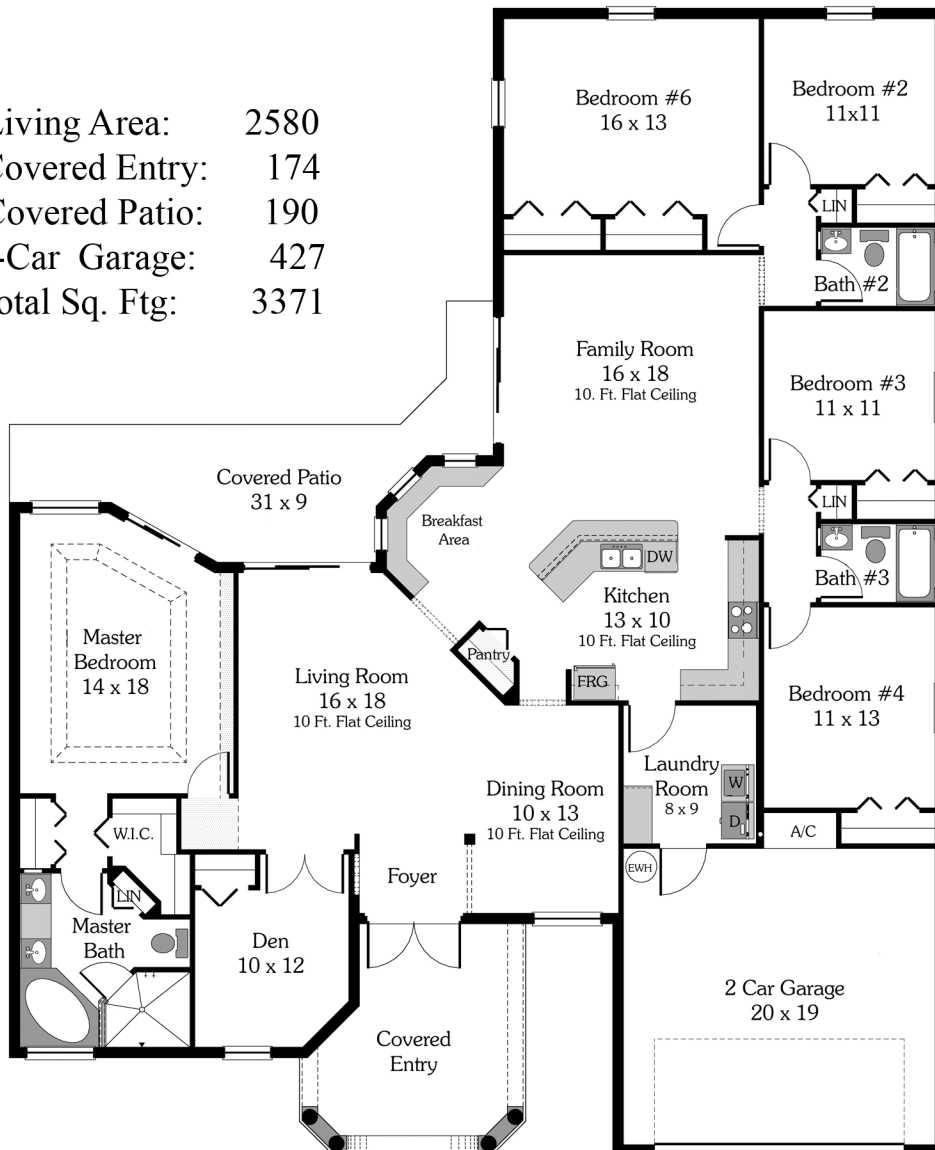


The Pinewood 6

5 Bedrooms Plus Den, 3 Baths, Family Room
 Living Room, 2 Car Garage, Covered Patio



Living Area: 2580
 Covered Entry: 174
 Covered Patio: 190
 2-Car Garage: 427
 Total Sq. Ftg: 3371



*Elevations and Floorplans intended for informational purposes only and are not exact depictions or drawn to scale